

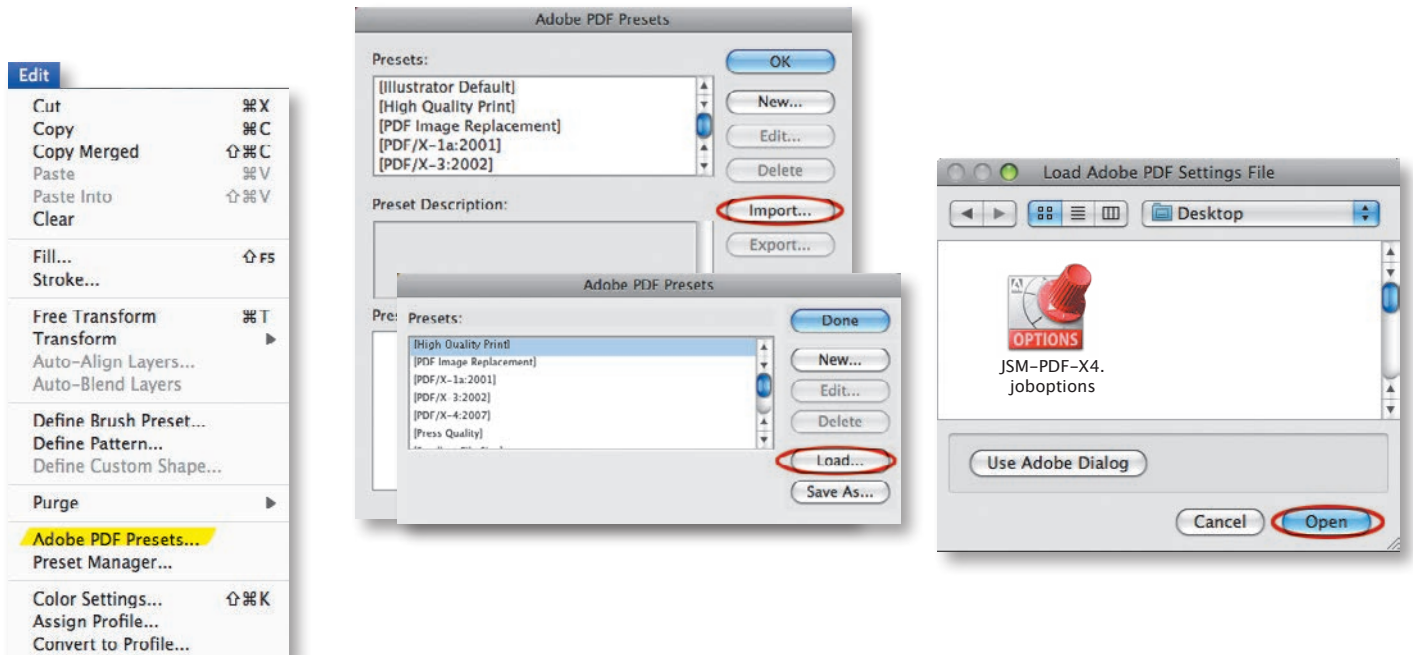
File Preparation

A PDF workflow requires you to start with clean files. Always proof your files carefully, and make sure that all colors are correct, all fonts are available and all images are properly linked.

Download and Install Settings

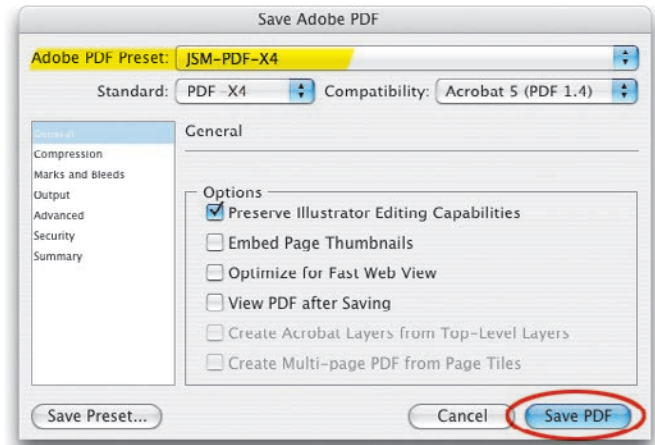
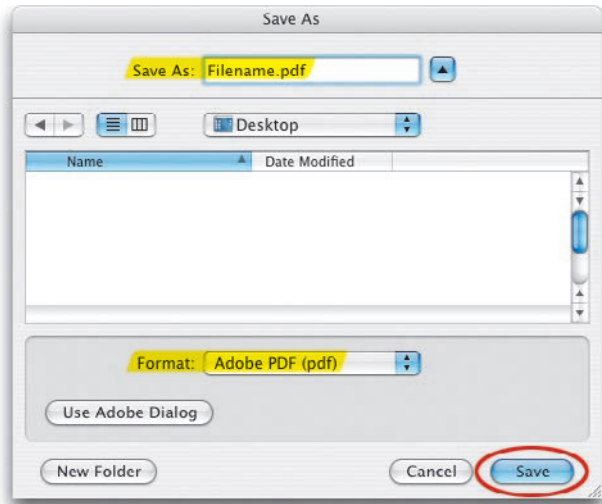
The PDF export filter built into the Creative Suite applications from version CS3 and later works well for creating a clean, printable PDF. To use the export filters with the J.S. McCarthy PDF settings you will need to install the JS McCarthy joboptions. These are based on the industry standard PDF X4 format. Download the JSM joboptions from our website at www.jsmcCarthy.com/wp-content/uploads/JSM-PDF-X4.joboptions.zip and decompress them.

Choose Adobe PDF Presets from the Edit menu. In Illustrator click on the Import button. In Photoshop click on the Load button. Navigate to and select the joboptions you downloaded earlier to install the PDF preset.



Illustrator CS3 and later

Go to the file menu and choose Save As... In the save dialog name your file and choose a location to save it. Pick Adobe PDF from the format menu at the bottom of the window. Click on the Save button. In the Save Adobe PDF window, pick the JSM-PDF-X4 joboption from the Adobe PDF preset menu and click on the Save PDF button.



Photoshop CS3 and later

Go to the file menu and choose Save As... In the Save dialog name your file and choose a location to save it. Pick Photoshop PDF from the format menu at the bottom of the window. In the Save Adobe PDF window, pick the JSM-PDF-X4 joboption from the Adobe PDF preset menu and click on the Save PDF button. In this case it is best to uncheck "embed color profile" in this dialog. The profile will be included elsewhere as part of the PDF-X4 standard so having the profile in both places isn't necessary.

